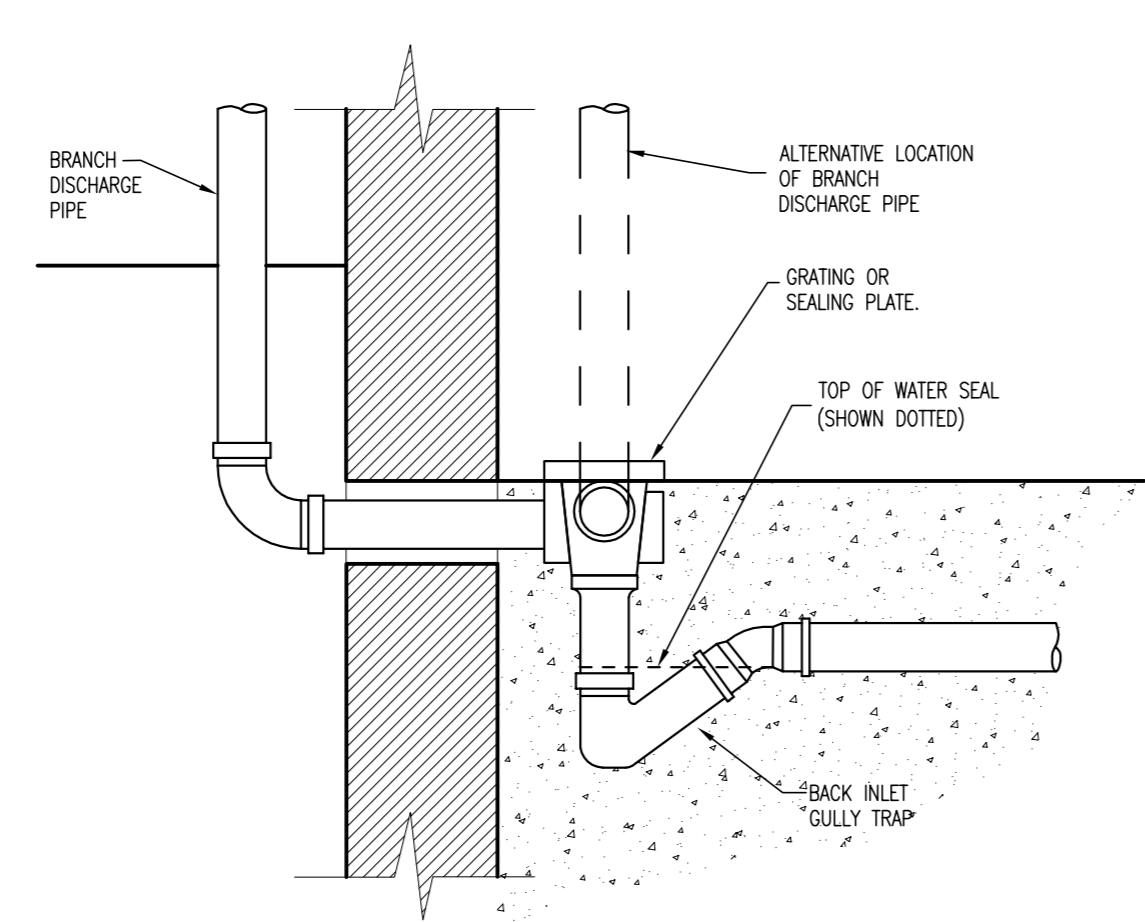
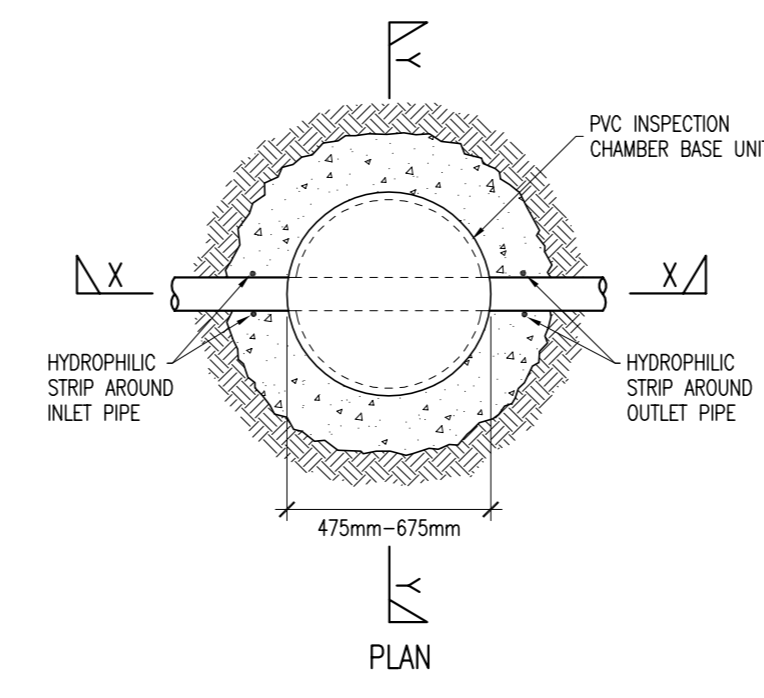


- NOTES:
- C20/25 CONCRETE TO HAVE A MINIMUM CEMENT CONTENT OF 260kg/m<sup>3</sup>, MAXIMUM WATER/CEMENT RATIO OF 0.65 AND SLUMP CLASS S2.
  - C25/30 CONCRETE TO HAVE A MINIMUM CEMENT CONTENT OF 280kg/m<sup>3</sup>, MAXIMUM WATER/CEMENT RATIO OF 0.65 AND SLUMP CLASS S2.
  - C40/50 CONCRETE TO HAVE A MINIMUM CEMENT CONTENT OF 400kg/m<sup>3</sup>, MAXIMUM WATER/CEMENT RATIO OF 0.45 AND SLUMP CLASS S3.
  - WHERE CLASS 6F1/6F2 CAPPING MATERIAL IS PROPOSED WITHIN 500mm OF CONCRETE OR STEEL, CLASS 6N TO BE USED INSTEAD.

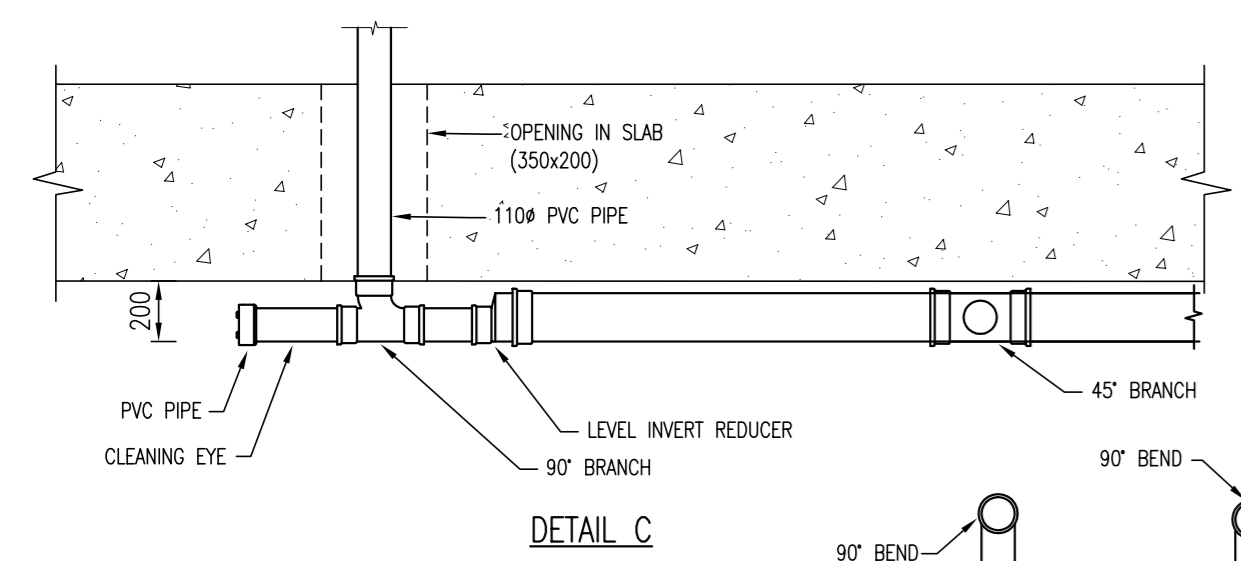
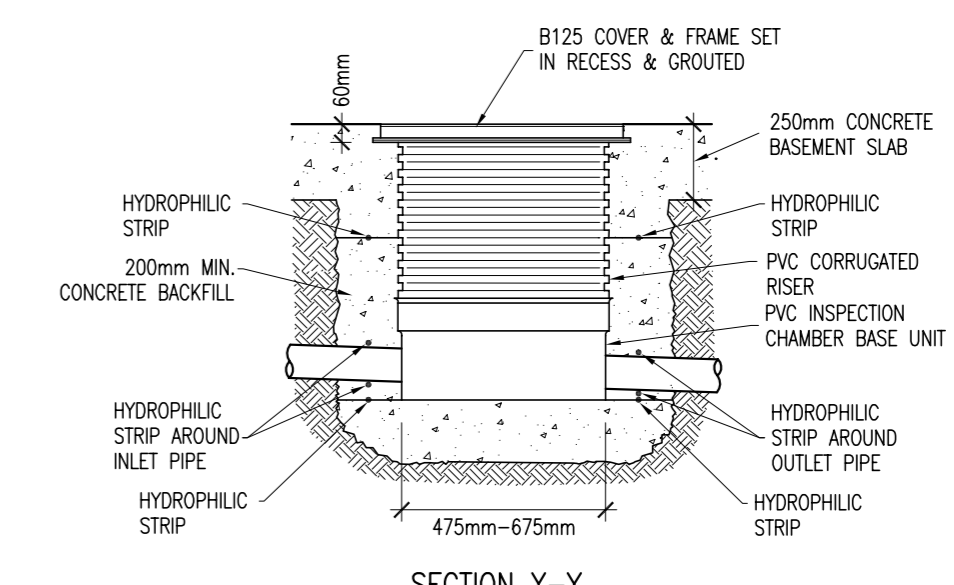
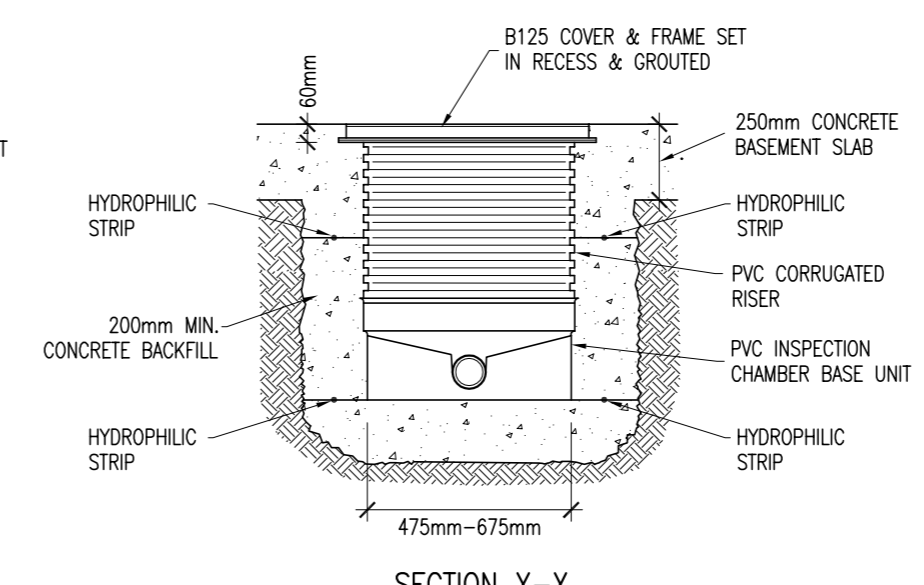
NOTE:  
ALL WORKS TO BE UNDERTAKEN IN ACCORDANCE WITH  
• TII SPECIFICATION FOR ROADWORKS  
• GREATER DUBLIN CODE OF PRACTICE FOR DRAINAGE WORKS  
• RECOMMENDATIONS FOR SITE DEVELOPMENT WORKS  
• IRISH WATER CODE OF PRACTICE



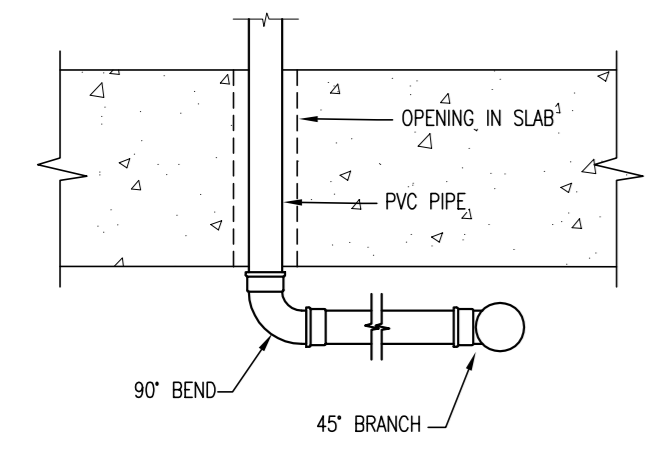
**BACK INLET GULLY TRAP**



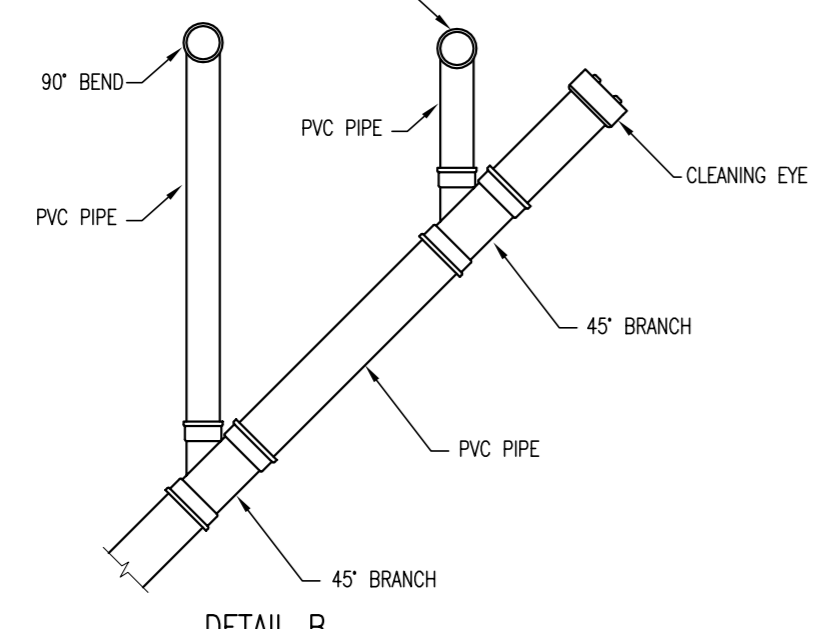
**BASEMENT INSPECTION CHAMBER DETAIL**



**DETAIL C**

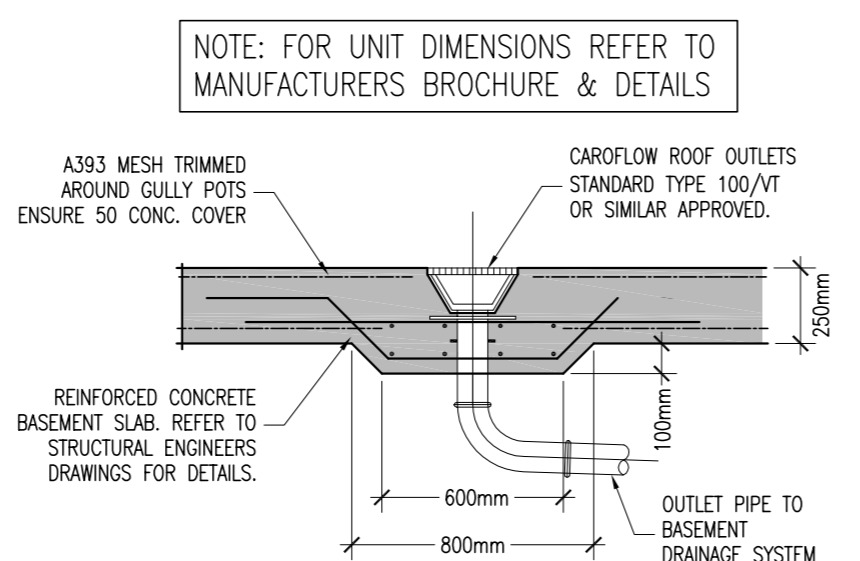


**DETAIL A**

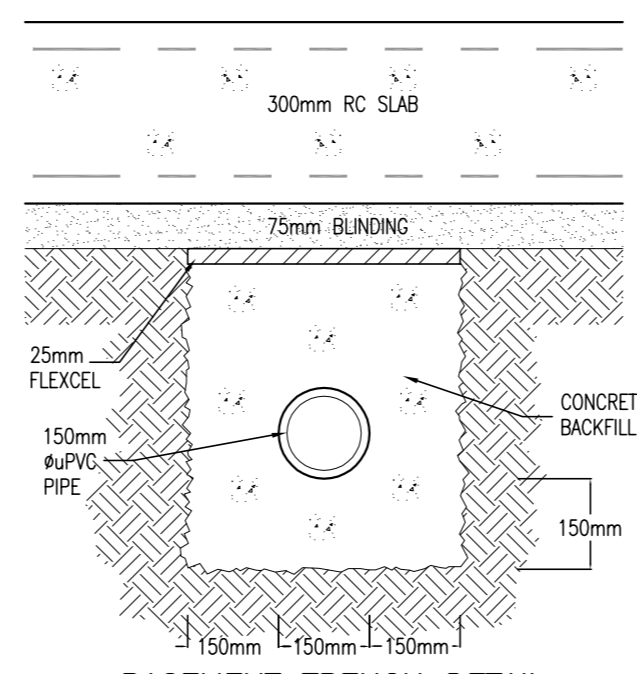


**DETAIL B**

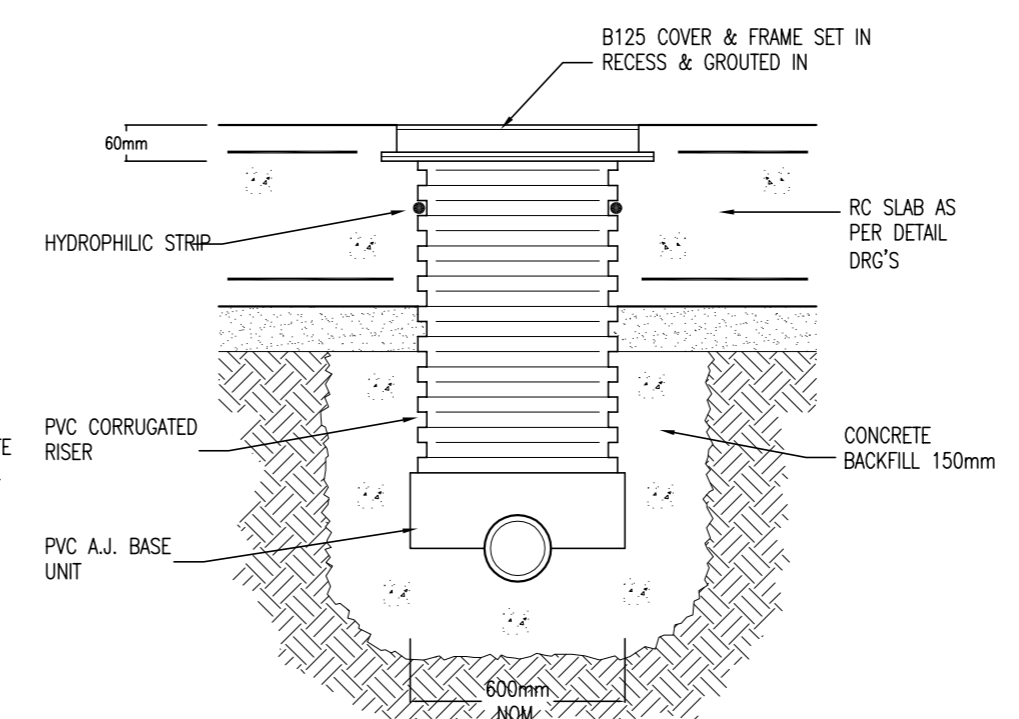
**TYPICAL SLUNG DRAINAGE PIPE DETAILS**  
SCALE 1:25



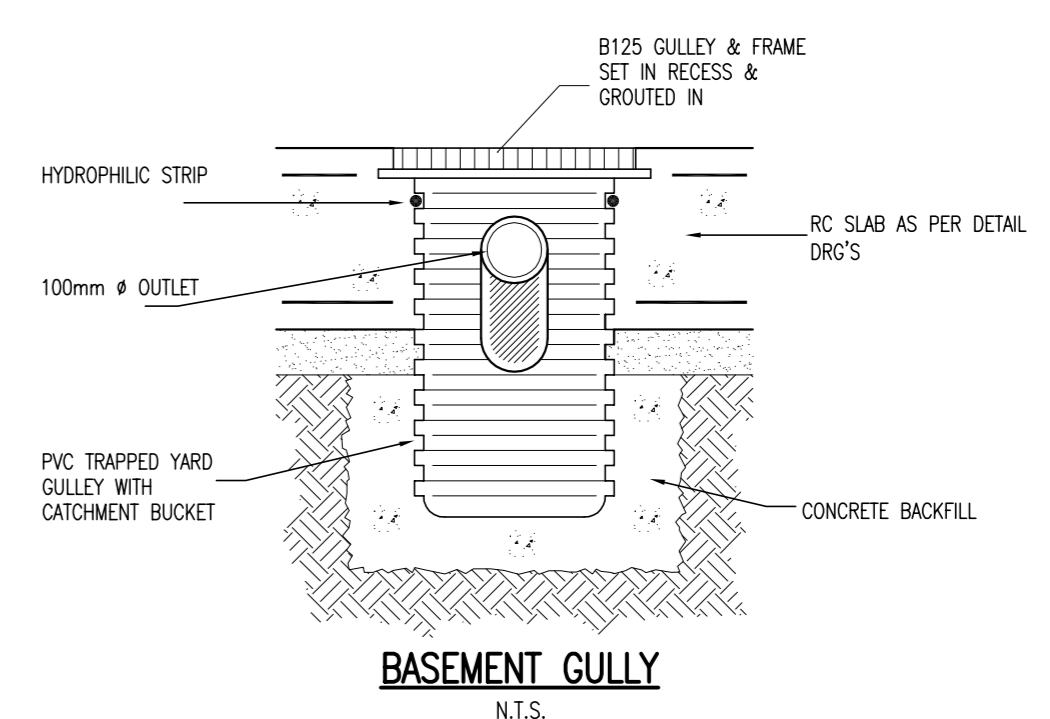
**BASEMENT SLAB GULLY**



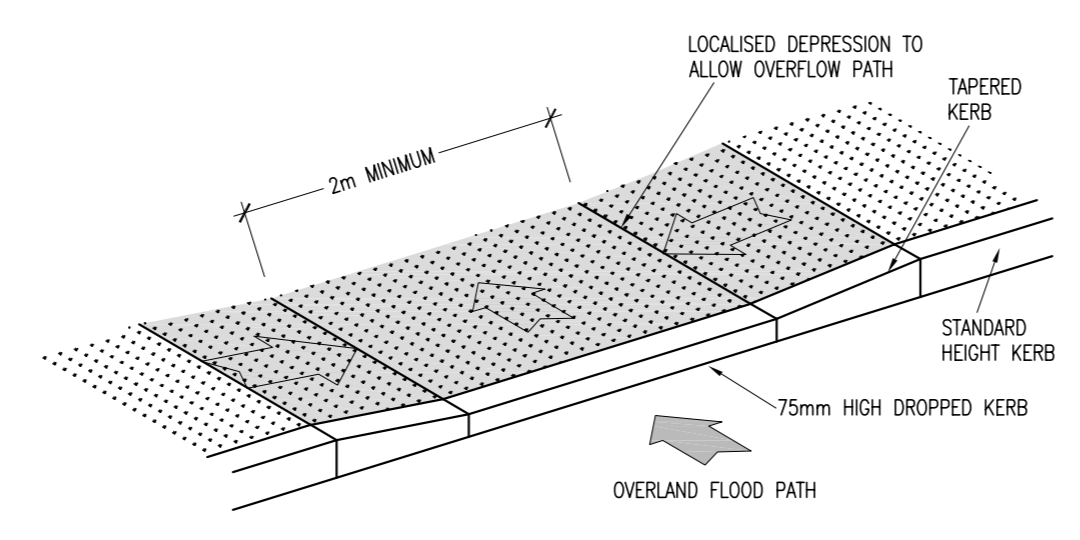
**BASEMENT TRENCH DETAIL**  
N.T.S.



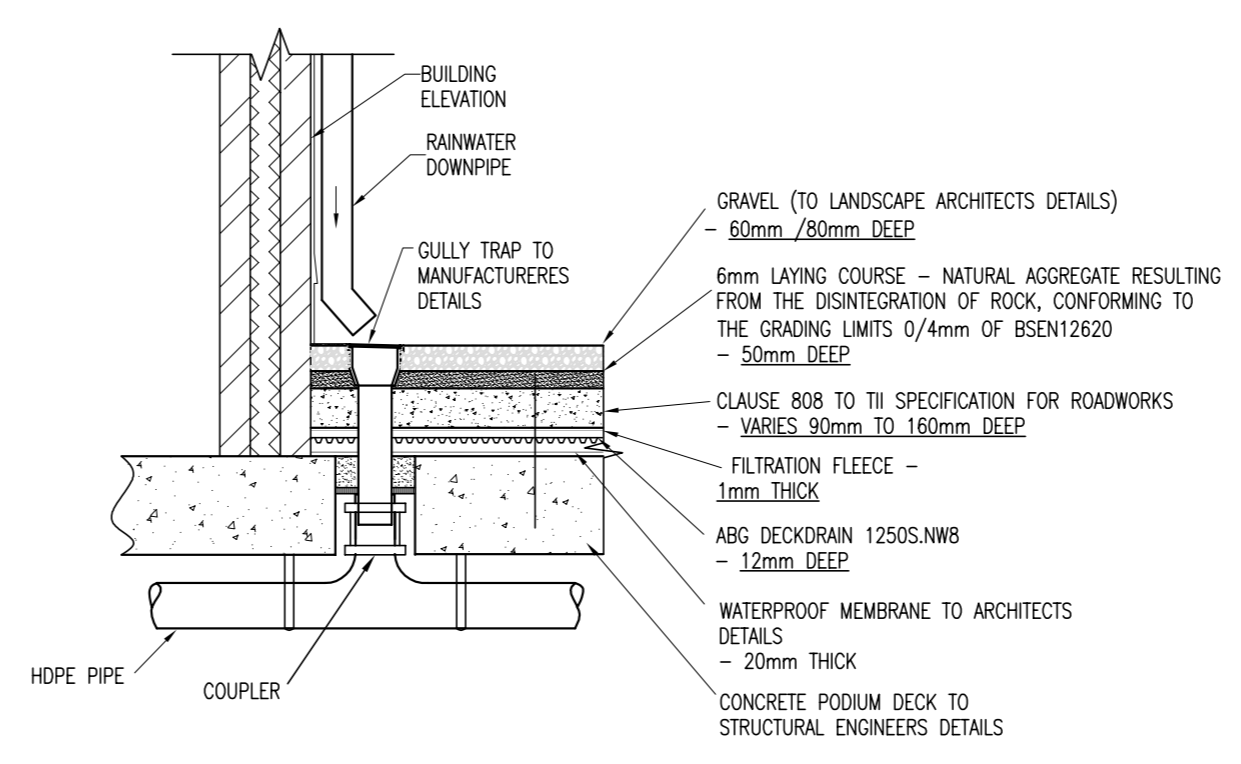
**BASEMENT A.J. DETAIL (SB'S)**  
N.T.S.



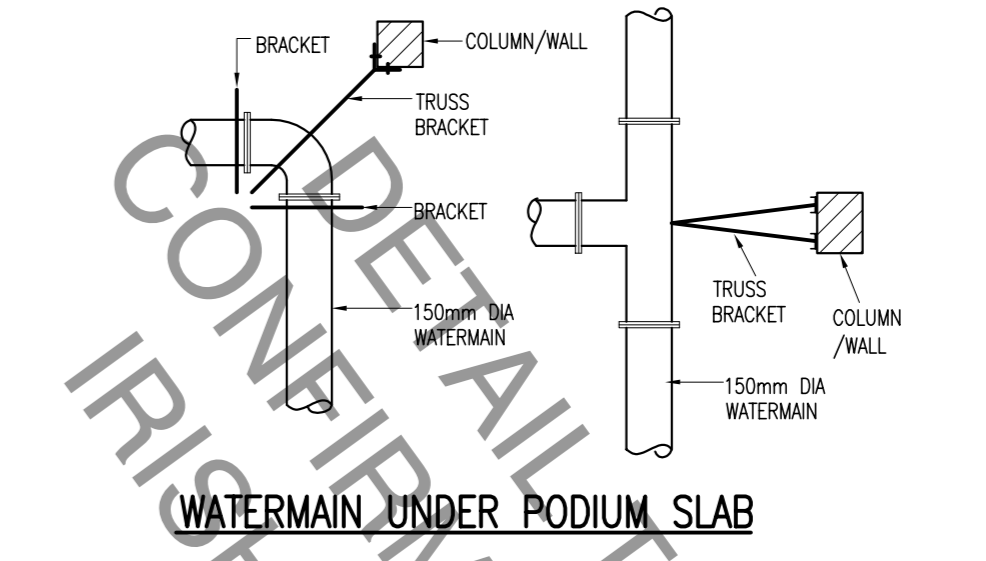
**BASEMENT GULLY**  
N.T.S.



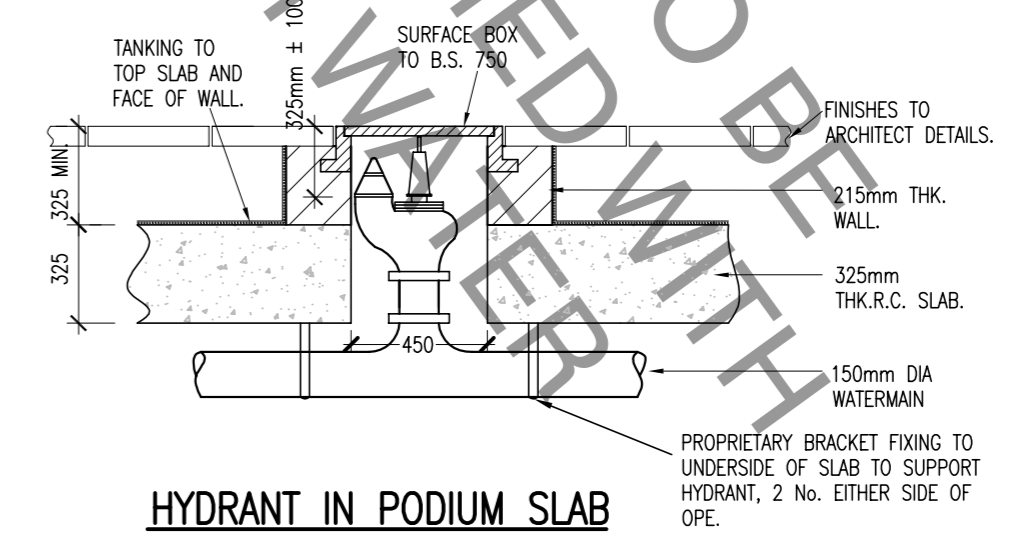
**DROPPED KERB**  
(FOR OVERLAND FLOWPATH)



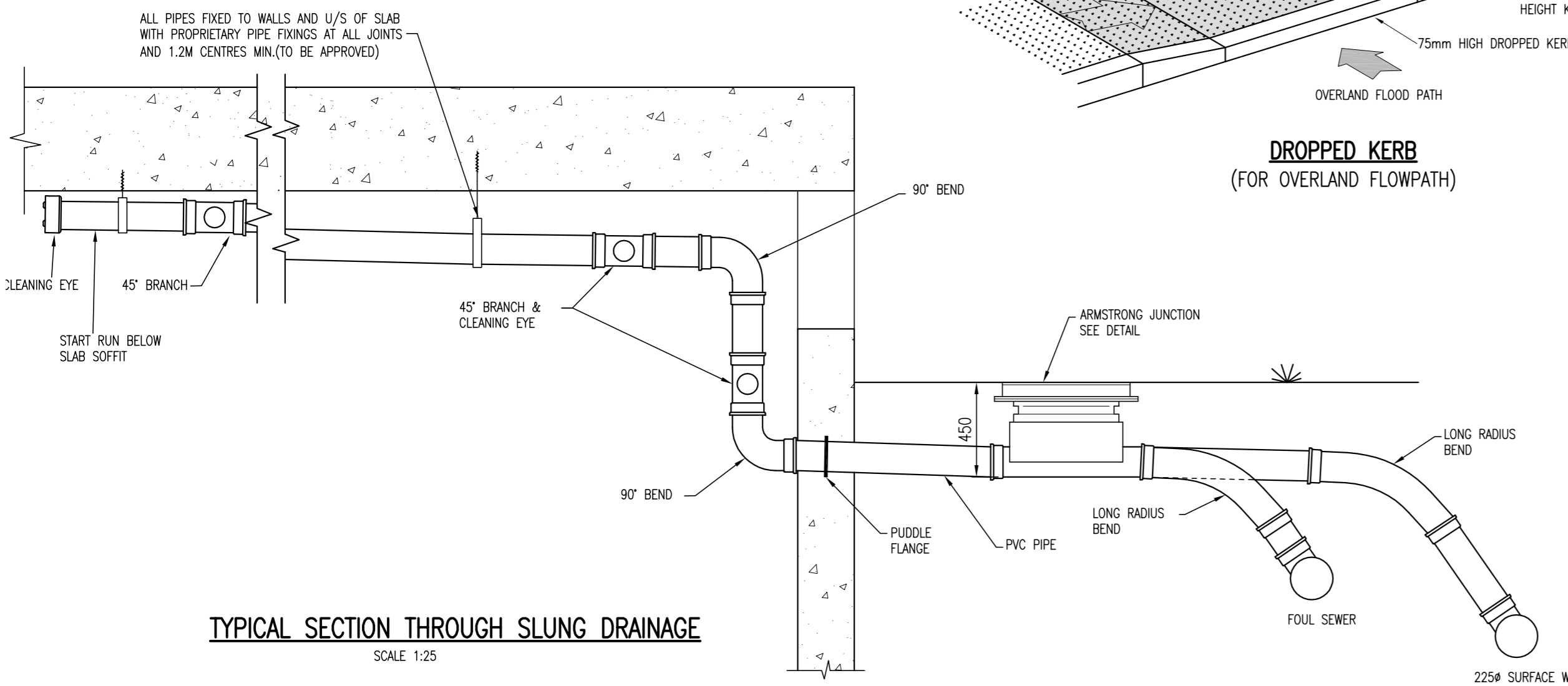
**PODIUM DECK RWP CONNECTION TO SLUNG DRAINAGE**



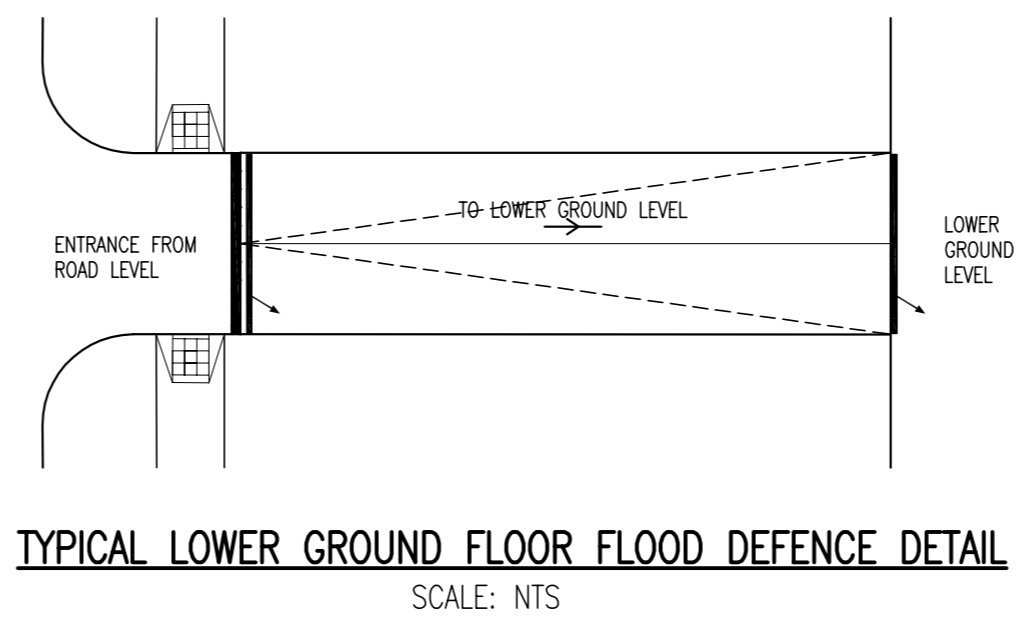
**WATERMAIN UNDER PODIUM SLAB**



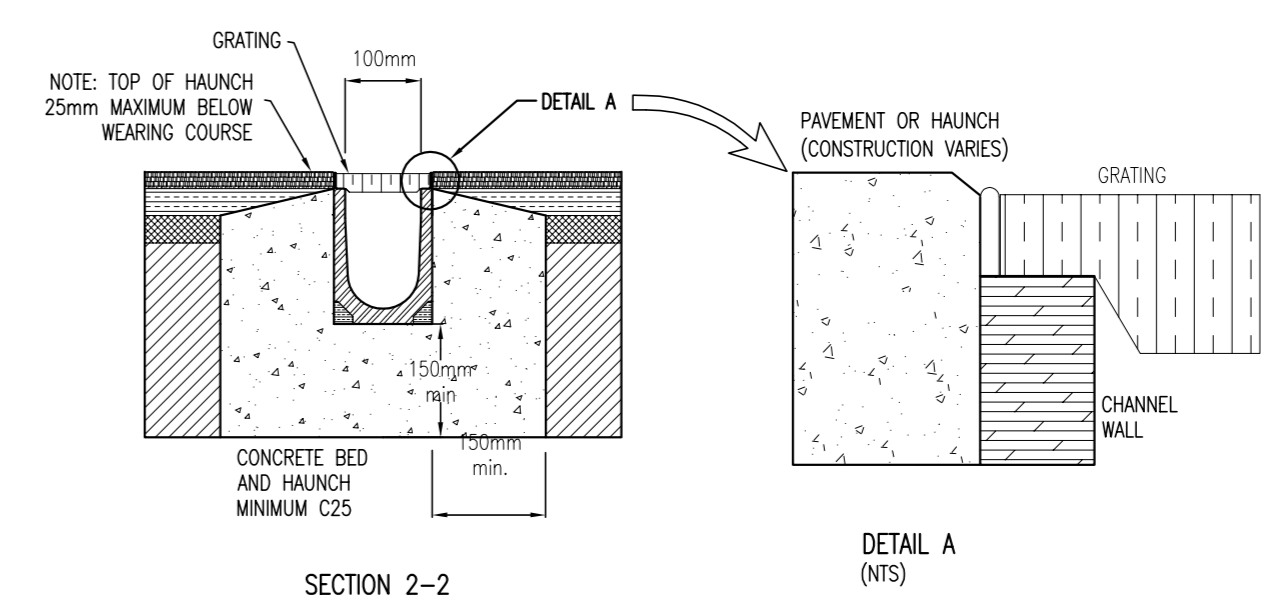
**HYDRANT IN PODIUM SLAB**



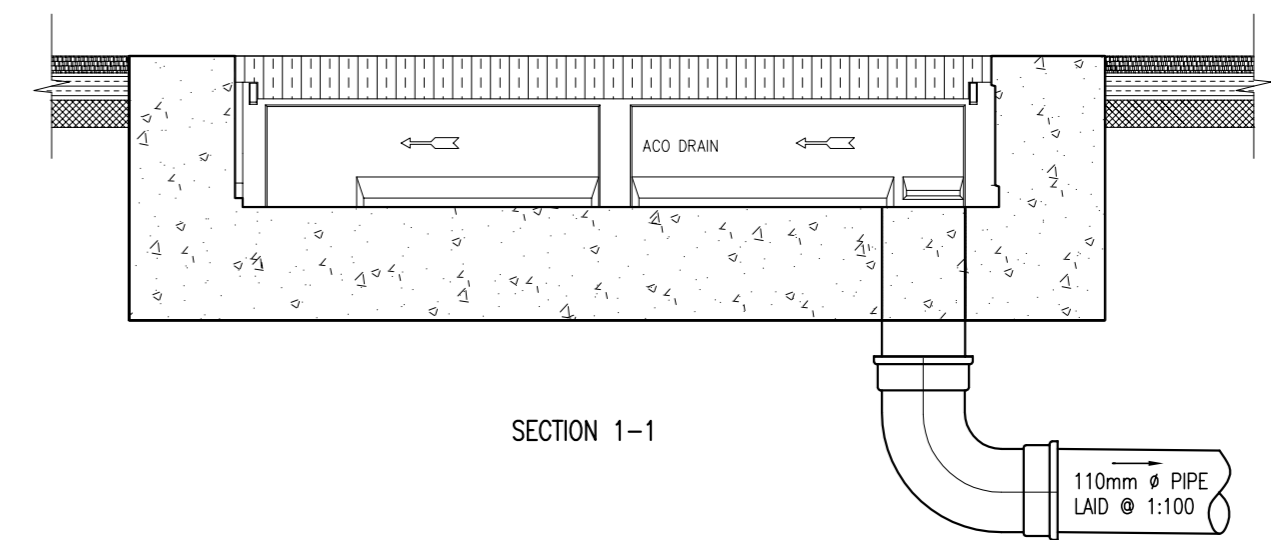
**TYPICAL SECTION THROUGH SLUNG DRAINAGE**  
SCALE 1:25



**TYPICAL LOWER GROUND FLOOR FLOOD DEFENCE DETAIL**  
SCALE: N.T.S.

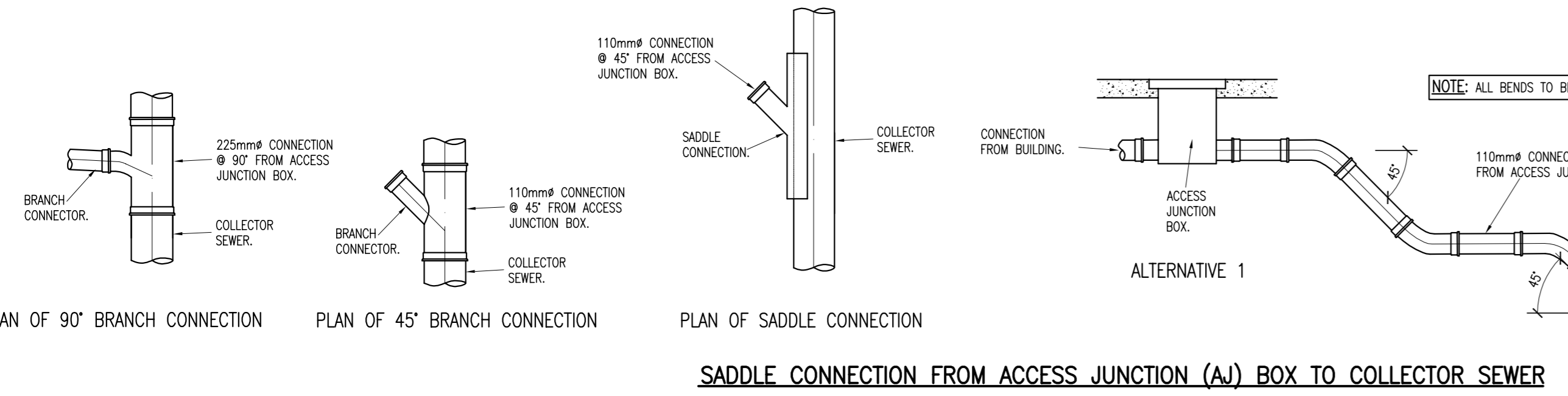


**SECTION 2-2**



**SECTION 1-1**

**ACO CHANNELS**  
(SCALE 1:100)



**SADDLE CONNECTION FROM ACCESS JUNCTION (AJ) BOX TO COLLECTOR SEWER**  
(SCALE 1:100)

B	21/06/19	FLOOD DEFENCE DETAIL REVISED	KAL/E	SVC
A	14/06/19	BASEMENT DETAILS ADDED	KAL/E	SVC
REV.	DATE	DESCRIPTION	BY	CHKD.

PLANNING				
DESIGNED	SVC	PREPARED	KAL/E	SVC
DATE	JUN 2019	CHECKED	PMF	PMF

**DBFL** Dublin Office Ormond House, Upper Ormond Quay, Dublin 7, Ireland. phone +353 1 400 4000 fax +353 1 400 4000  
Waterford Office Unit 2, The Chandery, 1-2 O'Connell Street, Waterford, Ireland. phone +353 51 309 500 fax +353 51 844 913

DBFL Consulting Engineers email: info@dbfl.ie www.dbfl.ie

PROJECT  
**PROPOSED RESIDENTIAL DEVELOPMENT AT CHURCH ROAD, KILLINEY, CO. DUBLIN**

DRG. TITLE  
**STANDARD DETAILS SHEET 2 OF 4**

ARCHITECT  
**O'MAHONY PIKE ARCHITECTS**

SCALE	1:25 @A1	FILE REF.	180153-3021
DRG. NO.	180153-3022		B